

DIAGNOSTIC SCANNER
Convex / Linear Ultrasonic System

HS-2200

Our unique technology is the product of our originality and continual pursuance of achieving high quality. It is also our purpose to contribute in ways that will enhance society.



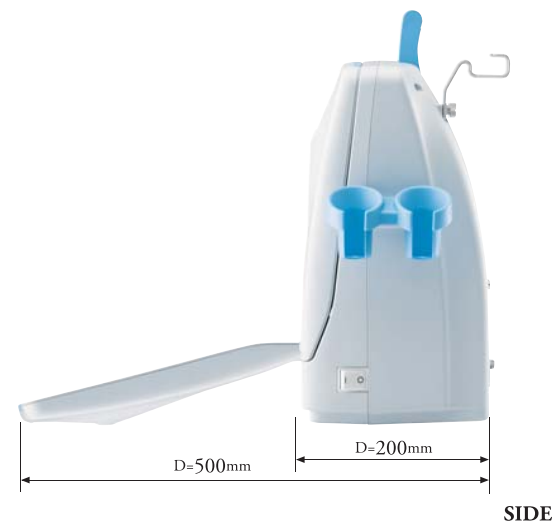
Specifications

Scanning Method	Linear/Convex Electronic Scan	
Display Mode	B, B/B, B/Z, B/M, M	
Range	0-20 mm to 0-240 mm (10mm step)	
Focusing Method	Full Digital Beam Forming, Continuous Dynamic Receiving Focus 4 Stage Dynamic Transmission Focus	
Ultrasound Frequency	2.8 to 12.5 MHz	
Display Monitor	12.1" SVGA Color LCD Monitor Wide Viewing Angle(horizontal:170°vertical:170°)	
Image Display	Up/Down, Left/Right, Positive / Negative	
Image Adjustment	B-gain, M-gain	36 to 100dB 1dB step
	Dynamic Range	35 to 95 dB 10dB step(1dB adjustable)
	STC	8 segments
	Acoustic Power	20% - 100%(10% step)
	Y correction	5 types(max. 10)
	H-res (Image Enhancement)	Soft: OFF and 4 level Edge: OFF and 3 level
	Sweep Speed	5 steps
Cine Memory	255 frames	
Measurement Function	Distance, Circumference / Area, Volume, Hip Joint, Histogram, Gestational Weeks Calculation , EFW, Velocity, LV Calculation	
Character Display	Hospital Name (40), Patient Name (30), ID (10), Age, Sex, DOB, LMP, Date, Time, Probe Type, Range, Gain, Acoustic Power, Dynamic Range, Gamma, H-res, Gray Scale, Frequency, Focus Information	
Probe Connector	2(selected by keyboard)	
Dimension	Approx. 335 (W) × 200 (D) × 380 (H) (mm)(keyboard closed) Approx. 335 (W) × 500 (D) × 380 (H) (mm)(keyboard opened)	
Net Weight	11 kg approx.	
Power Source	100V~240V AC 50/60Hz 150VA	
Data Storage	Still Image(Jpeg)	Internal(100 images max.) External USB Memory
	Moving Image(AVI)	External USB Memory
External I/O	USB Memory Port	×1
	Video Output	×2 Channel(composite video)
	External Monitor	×1 Analog RGB
	Printer Remote Port	×1
	Foot Switch Port	×1
Probes	5.0/3.5/2.8MHz 60R Convex probe	HCS-536M HCS-436M
	11.0/8.5/6.0MHz 40mm Linear probe	HLS-584M
	10.0/7.5/5.0MHz 50mm Linear probe	HLS-575M HLS-475M
	12.5/10.0/7.5MHz 30mm Linear probe(Small Parts)	HLS-513M HLS-413
	9.0/7.5/5.0MHz 12R Micro-Convex probe	HCS-5712M
	7.0/5.0/3.5MHz 20R Micro-Convex probe	HCS-452M
	9.0/7.5/5.0MHz 10R Micro-Convex probe	HCS-4710M
	9.0/7.5/5.0MHz 10R Micro-Convex probe(Transvaginal 120°)	HCS-5710MV HCS-4710MV
	5.0/3.5/2.8MHz 80mm Linear probe	HLS-438
Options	Video Printer	
	Foot Switch	
	Biopsy Guide	
	Stand Off	

*The specifications and appearance are subject to change without notice for improvement.
*Made in Japan



FRONT



SIDE



BACK



For human medical
Advanced technology and excellent image
Quality embodied in stylish unit



DIAGNOSTIC SCANNER HS-2200

HS-2200 is a portable, high-resolution, black and white ultrasound imaging system incorporating the latest technologies available into an economical, user-friendly package. High density, multi-frequency transducers provide excellent image quality in rugged field conditions or at the office.

image processing High Quality

What you see is reality!

Our HS-2200 Portable Linear/Convex Ultrasound System, the NEW standard for image quality and user efficiency in various applications of ultrasound procedures.

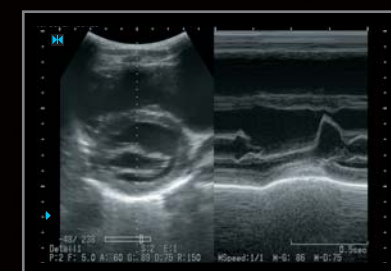
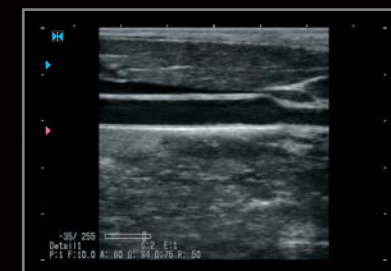
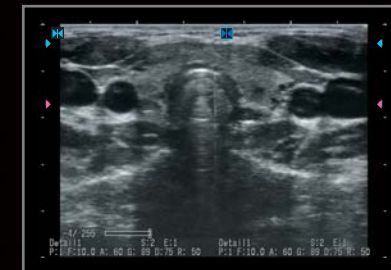
Features

1. Full digital system
2. Sharp and smooth H-res technology
3. 128-channel high resolution probes
4. Wide screen in a compact body
5. Patient database function
6. Moving image storage
7. Compact body, easy to carry



Full Digital System

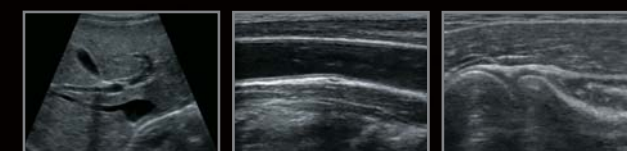
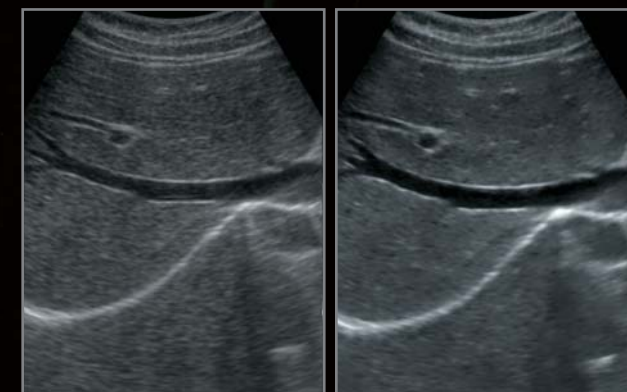
Complete digital technology enables a full range of continuous focus. Every pixel in the screen has optimized focus and the image is crisp and clear.



H-res (Our Resolution Technology)



Advanced image enhancement technology, "H-res", brings perfect solution for visibility. Detail1 realizes good resolution in deeper organs. Detail2 visualizes delicate tissue construction in shallower parts. Mild suppresses flutters in smaller effect. You can also turn it OFF to have direct signal image.

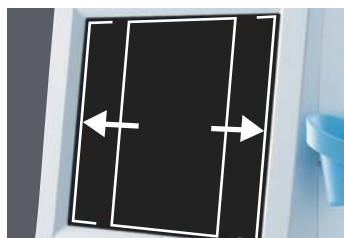




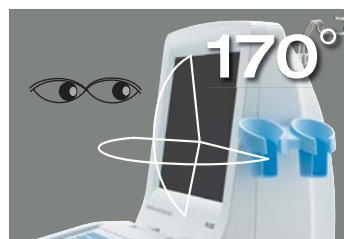
12.1-inch
Absolute wide screen in a compact body.



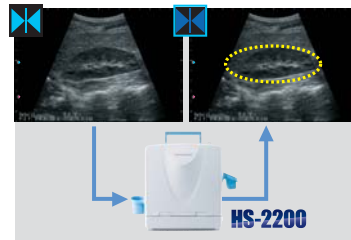
Contrast
Rich gray scale with good linearity gives accurate image



SVGA 800×600
Wide image display on a standard SVGA screen.



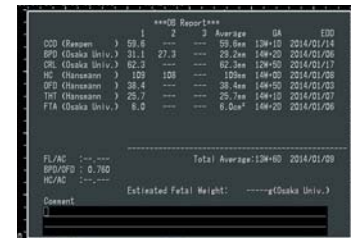
170° Wide viewing angle
enables easy observation in a limited operating environment.



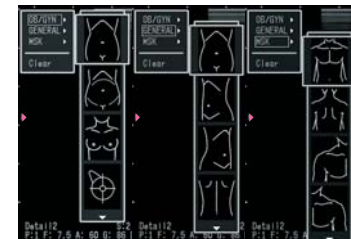
Database
Scanned images can be stored by the patient ID. Measurement of a stored image is also possible.



A-mode
indicates the intensity of echo signal by easy operation.



Report
Measurement results can be displayed in a list for record.



Body Mark
A variety of body marks are prepared to support various observation scenes.

The screen size of HS-2200 is 12.1 inches wide, bringing excellent visibility. The latest LCD technology has made it possible to have a very wide 170° viewing angle and brilliant high contrast image. It insures clear image anytime, anywhere.


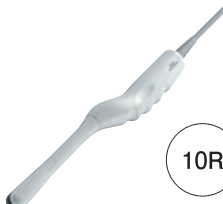





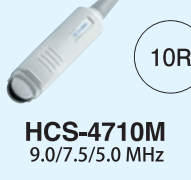
Display Monitor Clearness



Probes

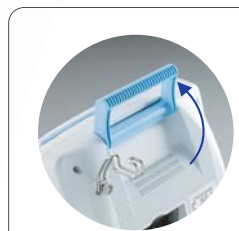
Multi-frequency imaging allows more procedures to be performed with each transducer.

Wide range of probe selection

- | Convex | Transvaginal |
|--|--|
|  60R
HCS-536M
HCS-436M
5.0/3.5/2.8 MHz |  10R
HCS-5710MV
HCS-4710MV
9.0/7.5/5.0 MHz |
| Linear | Micro-convex |
|  50mm
HLS-575M
HLS-475M
10.0/7.5/5.0 MHz |  20R
HCS-452M
7.0/5.0/3.5 MHz |
|  40mm
HLS-584M
11.0/8.5/6.0 MHz |  12R
HCS-5712M
9.0/7.5/5.0 MHz |
|  30mm
HLS-513M
HLS-413
12.5/10.0/7.5 MHz |  10R
HCS-4710M
9.0/7.5/5.0 MHz |

Simple & Useful Operation

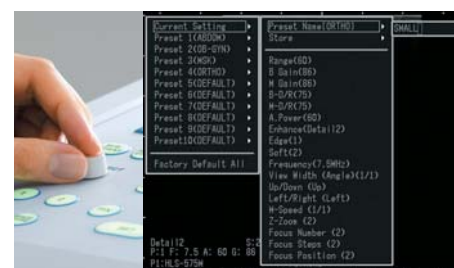
All necessary functions come in one compact unit.
The compact body is easy to carry, so it is useful for not only in clinics or hospitals, but also for outside observation.
Simple menu system is speedy for daily use.



Carrying handle
Turns out for convenient portability.



Full size keyboard with ergonomic design enables stress free operation.



Keyboard

Ergonomic design with backlit keys supports easy operation even in a dark examination room. Direct key function is also prepared.

Preset function

System setting can be assigned to function keys up to ten settings and can be easily recalled.

Smooth operation anywhere

Foldaway keyboard and LCD panel make for a slim style unit that is easy to carry.



Compact design

It fits in limited space with its slim style design.

Output

Image output signal is available in both PC format (SVGA) and TV format (NTSC/PAL)



USB memory usable

When a USB memory is inserted, records can be done directly into the USB memory. Moving images can also be stored to the USB memory in AVI format.



World network

We have a worldwide distributor network and supports the after service and maintenance after sales. Please contact your local distributor. They always have direct connection to Honda Electronics.



Made in Japan

This product is assembled in Japan. Honda produces even the ultrasound sensor ceramics in its own factory.