



Hosp. MI-0.18 TIS-0.10 2016-09-29
Canine Cardiac 5 MC6-E/8.0M 12:37:04

57.8 (B)
FPS: 19
DN: 85
PWR: 88 %
FRQ: 8.0M
DN: 88
D: 9.1 cm
X-con: Nor
(CF)
FRQ: 4.6M
PRF: 6000Hz
WF: 0
-57.8 DN: 147
Q-flow: On

ECO6 vet

Delicated for veterinary ultrasound

WWW.CHISON.COM



CHISON
Value Beyond Imaging



CHISON **ECO6 VET**, offers lots of advanced capabilities in this small packages, specially engineered for veterinary imaging in both small animal and large animal. It is a powerful veterinary ultrasound system for every species and every application, whether in the clinics or outdoor.



- ✓ *Compact and light weight design for convenient traveling.*
- ✓ *Triplex mode for efficient diagnose.*
- ✓ *Built-in battery for outdoor scanning.*
- ✓ *CW mode for high velocity detection.*
- ✓ *CPA and DPD mode for good color sensitivity.*



Wide range of applications



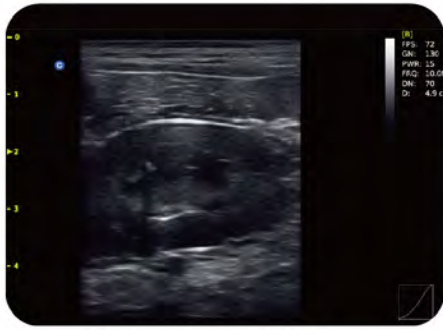
- Smaller footprint , easy to target whole body
- Ergonomic design, release from scanning fatigue
- Higher frequency up to 12MHz, obtain near filed image
- Lower weight, easy to carry, easy to scan
- High frequency linear probe with good resolution and Penetration
- Frequency range:5.3MHz-10.0MHz
- Excellent choice for superficial scanning: tendon, testicle, intestine
- Dedicated linear-rectal probe for large animal's reproduction
- Black color for durable usage,easy to clean
- Ultra-long cable to keep the system for the safe distance



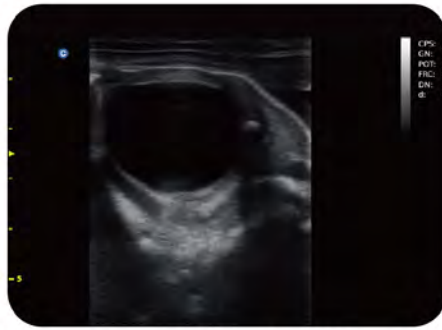
Professional Veterinary Packages

-- Dedicated vet reports and professional vet calculation packages

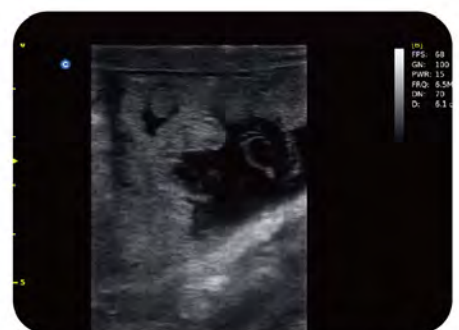
Cardiology	Canine	Feline	Ovine	Equine	Bovine
Distance	GSD	BPD	BPD	GSD	BPD
⊕ Single Plane	- CRL	HD	CRL	⊕ Volume	- CRL
⊕ Biplane Ellipse	- HD	BD	TD	⊕ Thyroid	- TD
⊕ Bullet Method	- BD	⊕ Volume	GSD	⊕ Bladder Volume	⊕ Volume
⊕ Modified Simpson	⊕ Volume	⊕ Thyroid	⊕ Volume	Report	⊕ Thyroid
Report	⊕ Thyroid	⊕ Bladder Volume	⊕ Thyroid		⊕ Bladder Volume
	⊕ Bladder Volume	Report	⊕ Bladder Volume		Report
	Report		Report		



Canine kidney,B Mode



Equine fetal eyeball,B Mode



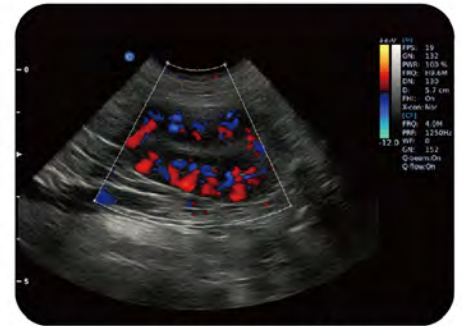
Equine umbilical cord,B Mode



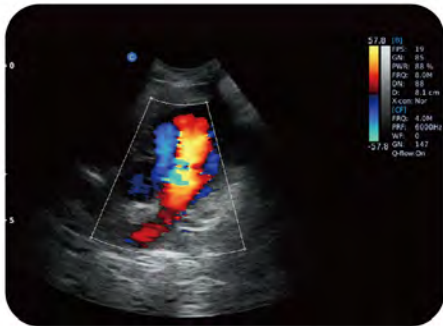
Canine cardiac,B Mode



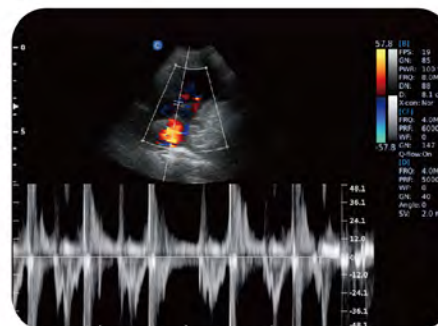
Canine liver,Chroma



Canine kidney,Color Mode



Canine cardiac,C Mode



Canine cardiac,PW Mode



4.0MHz-12.0MHz Micro-Convex
MC6-A



5.3MHz-10.0MHz Linear
L7M-A



4.0MHz-10.0MHz Linear Rectal
L7V-A



2.5MHz-4.0MHz Phased Array
P3-A



2.0MHz-6.8MHz Micro-Convex
MC3-A



5.0MHz-10.0MHz Linear Rectal
R7-A



5.3MHz-11.0MHz Micro-Convex
L7S-A



2.5MHz-5.0MHz Convex
C3-A

CHISON MEDICAL IMAGING CO., LTD.

Sales & Service Contact Address:

No. 9 Xin Hui Huan Road, New District, Wuxi, Jiang Su Province, China214028

TEL: 0086-510-85310593 / 85310937 FAX: 0086-510-85310726 EMAIL: export@chison.com.cn

We reserve the right to make changes to this catalogue without prior notice
Please contact our local dealer for the latest information.