

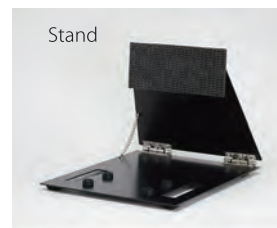
Dimensions



Specifications

Scanning Method	Linear /Convex Electronic Scan		
Display Mode	B, B/B, B/M, M, B/Z,		
Range	-5.0MHz	0~2-24cm (1cm Step : Adjustable)	
	7.5MHz-8.5MHz	0~2-16cm (1cm Step : Adjustable)	
	10MHz	0~2-10cm (1cm Step : Adjustable)	
Beam Focus Method	Full Digital Method		
	4 Stages Dynamic Transmission Focus		
	Dynamic Receiving Focus		
Ultrasound Frequency Rate	1.5 to 11.0 MHz		
Display Monitor	8.4 inch Color Liquid Crystal Wide range viewing angle (Horizontal: 170° Vertical: 170°)		
Image Display	Up/Down, Left/Right		
Image Adjustment	B-Gain, M-Gain	36 to 100dB 1dB step	
	Dynamic Range	35 to 95dB 1dB step	
	STC	5 styles	
	Acoustic Power	20% to 100% (10% step)	
	γ correction	5 types	
	H-res (Image Enhancement)	Soft: OFF and 4 levels	
		Edge: OFF and 3 levels	
	Sweep Speed	5 steps	
	Doppler	CFM, PD (Available for HLV-875M only)	
	Cine Memory	255 frames	
Measurement Function	Distance, Circumference, Area, Volume, Tendon%, Histogram,		
	Pregnancy Week, Velocity, LV Calculation		
Character Display	Hospital Name (40), Patient Name (30), ID (26), Age, Sex,		
	DOB, Date, Time, Probe Type,		
	Range, Gain, Acoustic Power, Frequency, Dynamic Range, Gamma, H-res,		
	Gray Scale, Focus Information		
Probe Connectors	1		
Dimension	220mm(W) × 69mm(D) × 308mm(H)		
Net Weight	3kg approx. (Excluding Probe)		
Power Source	AC Adapter	100V to 240V 50/60Hz 63VA	
	Battery	14.8V 5000mAh	
Data Storage	Still Image (JPEG)	Internal (100 image max) / External USB memory	
	Still Image (DICOM)	External USB memory	
	Moving Image (AVI)	External USB memory	
External I/O	USB Memory Port	×1	
	DVI Output	×1	
Probes	Linear Probe (Rectal)	10.0/7.5/5.0MHz 50mm	HLV-875M
	Linear Probe	11.0/8.5/6.0MHz 40mm	HLS-884M
	Linear Probe	3.0/2.0/1.5MHz 120mm	HLV-7212M
	Linear Probe	3.0/2.0/1.5MHz 180mm	HLV-7218M
	T-Shaped Probe	11.0/8.5/6.0MHz 15+25mm	HLS-882MT
	Micro Convex Probe	9.0/7.5/5.0MHz 12R	HCS-8712M
	Micro Convex (OPU)	9.0/7.5/5.0MHz 10R	HCV-7710MV
Convex Probe	5.0/3.5/2.8MHz 60R	HCS-736M	
Accessories	Shoulder Belt, AC Adapter and Power Cord, Battery Charger, Battery Pack, Ultrasound Gel, Stand		

Accessories



8.4 inch

DIAGNOSTIC SCANNER

Convex/Linear Ultrasonic System

HS-1600V

Our unique technology is the product of our originality and continual pursuance of achieving high quality. It is also our purpose to contribute in ways that will enhance society.



LCD Brightness
600 cd/m²

HONDA ELECTRONICS CO.,LTD.

Medical Division

20 Oyamazuka, Oiwa-cho, Toyohashi
Aichi 441-3193, Japan
TEL: +81-532-41-2514 FAX: +81-532-41-4441
<http://www.honda-el.com/>

Registered company for ISO9001/ISO13485/ISO14001



Attention

- Contents of this catalog are as of December 10, 2018.
- The specification and appearance are subject to change without notice for improvement.
- Actual colors of products and colors of this catalog may a little different cause of printing.

is the trademark of HONDA ELECTRONICS CO.,LTD.
This catalog is printed by vegetable ink on recycle paper.

(Contact)

December 10, 2018.

For the small, large and mixed animal practice
Advanced technology and excellent image
Quality embodied in stylish unit



MADE IN JAPAN



DIAGNOSTIC SCANNER HS-1600V

Ultrasound Diagnostic Scanner

Easy to carry light compact body of approximately 3kg,
and reduce user's physical strains during scanning in house visit and outdoors.

- Compact body, easy to carry
- Highest image quality by H-res technology
- Both battery and AC power usable
- High performance LCD usable in outdoors
- Easy key operation
- Variety of measurement functions
- Easy operation of image storage
- Convenient shoulder belt



Excellent ultrasound images

Mobile body with highest image quality of
ultrasound diagnostic that representing scanning
region in detail.

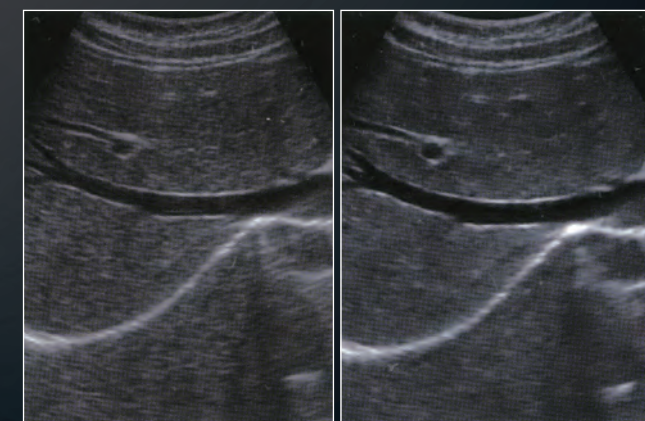


Mobile body without compromise
Image quality enables proper diagnosis



Our original image enhancement technology

H-res™ (Our Resolution Technology)
Advanced image enhancement technology,
“H-res”, brings perfect solution for visibility.
Detail 1 realizes good resolution in deeper
organs. Detail 2 visualizes delicate tissue
structure in shallower region. Detail 3
visualizes bones for observation. Mild reduces
the image enhancement effect. You can also
turn it OFF to have direct ultrasound image.



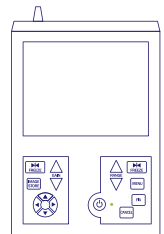
H-res-OFF

H-res-ON

Mobility & High Quality

Compact body, easy to carry

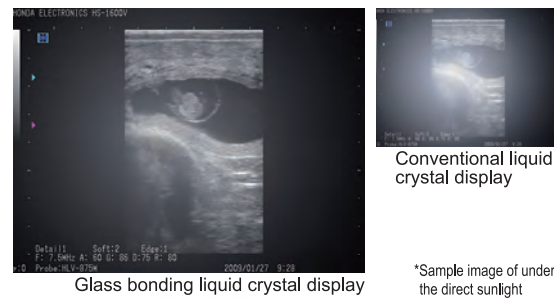
Easy to carry light compact body of approximately 3kg and reduce user's physical strains during scanning in house call and outdoors.



Approximate
A-4 notebook
size

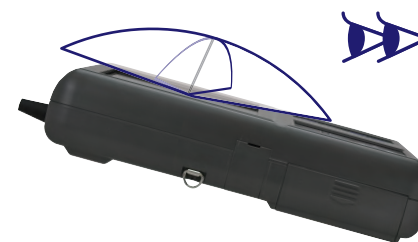
Usable in any places

High luminance liquid crystal display with glass bonding treatment enhances visibility, diagnosis images are clearly projected even under the direct sunlight. Liquid crystal display gets no fogged even when temperatures and humidity varies rapidly.



Wide range of 170°viewing angle

Wide viewing angle liquid crystal display has 170°angle in horizontal and vertical. It made free angle diagnosis possible in limited operating environments.



Both battery and AC power usable

Integrated high performance lithium ion battery in the body realizes 3 hours use in the place without power supply. Equipped report function of battery lasting time makes battery sign lights to inform when lasting time becomes short.



Variety Probe

Broadening diagnosis applications by clear ultrasound images
Wide range of probe selection

Micro-convex

Small animals : abdominal, cardiac, reproduction



12R

HCS-8712M
9.0/7.5/5.0MHz

Linear

Small animals : small parts, abdominal
Large animals : tendon (musculoskeletal and orthopedic)



40mm

HLS-884M
11.0/8.5/6.0MHz

Convex

Mix practice animals : abdominal, cardiac, reproduction



60R

HCS-736M
5.0/3.5/2.8MHz

Rectal

Large animals : reproduction



50mm

HLV-875M
10.0/7.5/5.0MHz

Doppler

Special Order

Large animals : Ovum Pick-up



10R

HCV-7710MV
9.0/7.5/5.0MHz

Special Order

Large animals :
(swine, sheep, goat, alpaca, llama)
Meat Science



120mm 180mm

HLV-7212M
HLV-7218M
3.0/2.0/1.5MHz

T-Shaped

Small animals, Large animals :
Guide for needle injection



15mm
+
25mm

HLS-882MT
11.0/8.5/6.0MHz

Mobility & High Functionality



Doppler functions

Honda Color Flow Mapping (CFM) and Power Doppler (PD) functions do not degrade Black and White image quality when in use.
(CFM and PD available for HLV-875M probe only)



Measurement functions

Measurement is prepared for small, large, and mix practice animals. Scanning images and measurement result can be stored under the database with easy operation.

Body mark

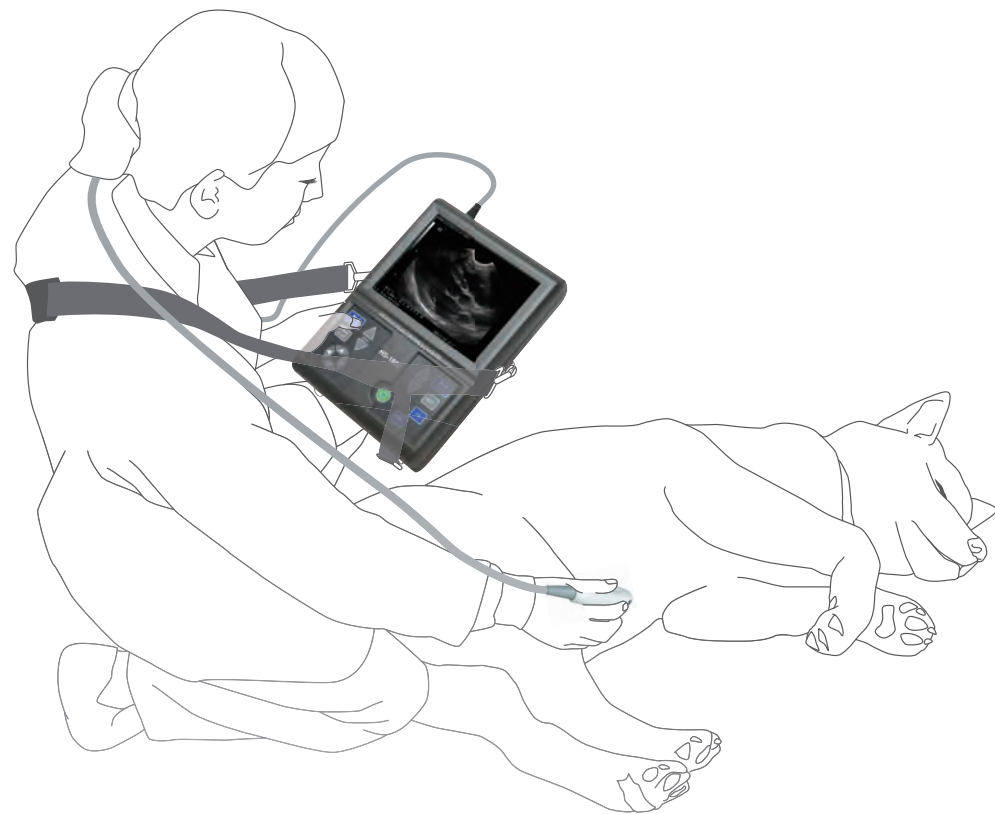
* Sample pictures

Variety of body marks are prepared to support various diagnostic scenes.



USB

Movie file and still image can be stored to the USB memory and accessed in personal computers. Approx. 100 images are stored in the system memory.



Shoulder belt

Easy to use

Both hands are freely usable when the system is held by shoulder belt. Reduce physical strains during long time operation.

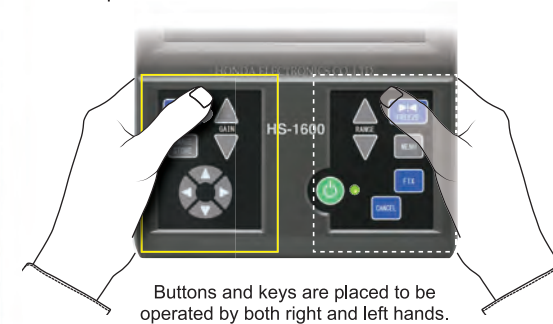


Clear and finest ultrasound image and wide view angle

Introducing glass bonding liquid crystal display. LCD and cover glass are bonded by a special technique and no air layer in between; it leads high visibility and prevents condensation.

Simple operation

Minimum number of operation buttons or keys made interface simpler, easily operated.



Buttons and keys are placed to be operated by both right and left hands.



Pursuing high performance and user-friendliness
Expanding scanning possibilities by various functions

Variety of setting menu

Variety of measurement functions—distance, area and volume—are employed focusing on obstetrics measurement for dogs, cats and horses. It has ultrasound scanning mode, B, B/B, B/M, M, B/Z.

Simple operation of image storage

Diagnostic images are easily stored in system memory and USB memory. Saved images in USB memory are accessible by personal computer. Saved images can be administrated in hospitals and farms as diagnostic record.

Main applications

- Pregnancy detection (dog, cat, cow, pig, horse, camel)
- Abdominal, cardiac for small animal
- Tendon (equine)
- House call (small animal, large animal)
- Health care of animals in the pet shop
- Scanning in the zoo



Made in Japan

This product is assembled in Japan. Honda produces even the ultrasound sensor ceramics in its own factory.